




PROJECT:

EastMed Pipeline Project

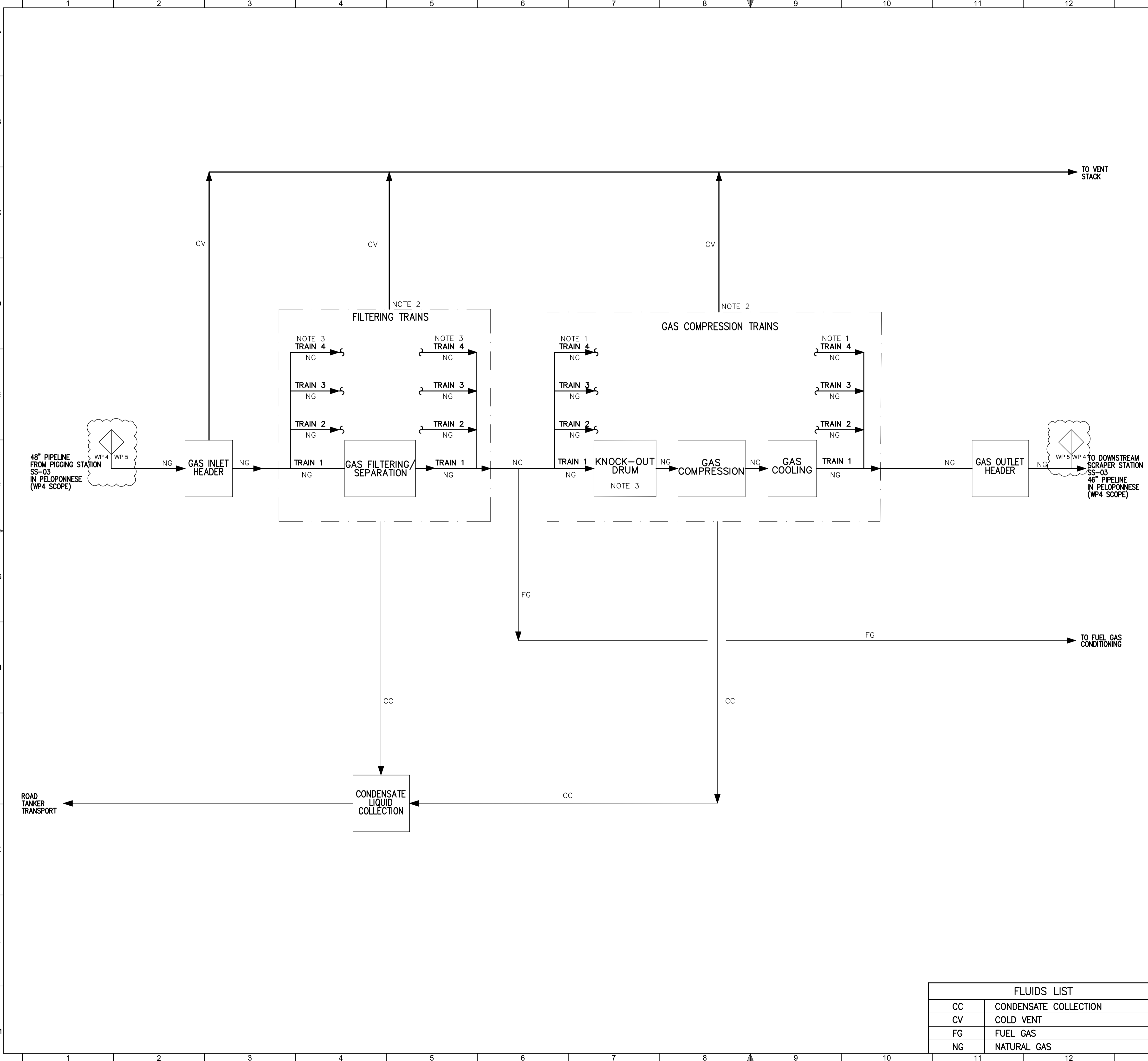


Document Title:	EastMed Greek Section – Environmental and Social Impact Assessment
Document Subtitle:	Annex 6L – General Block Flow Diagram of Main Stations
Project Document No:	PERM-GREE-ESIA-A06_0013_0_Annex6L

	EASTMED PIPELINE PROJECT	 
	EastMed Greek Section – Environmental and Social Impact Assessment	DOC No: PERM-GREE-ESIA-A06_0013_0_Annex6L REV. : 00 PAGE : 2 OF 2

Document details	
Document title	EastMed Greek Section – Environmental and Social Impact Assessment
Document subtitle	Annex 6L – General Block Flow Diagram of Main Stations
Company	IGI Poseidon
Author	ASPROFOS
Project	EastMed Pipeline Project
Project Document No.	PERM-GREE-ESIA-A06_0013_0_Annex6L
Date	03/06/2022
Version	00

Document history					
Revision	Author	Reviewed by	Approved by	Date	Status
00	ASPROFOS	IGI POSEIDON	IGI POSEIDON	03/06/2022	For submission to Authorities



REFERENCE DOCUMENTS / DRAWINGS ΣΧΕΤΙΚΑ ΕΓΓΡΑΦΑ / ΣΧΕΔΙΑ	
DOCUMENT / DRAWING No ΑΡ. ΕΓΓΡΑΦΟΥ / ΣΧΕΔΙΟΥ	DOCUMENT / DRAWING TITLE ΑΡ. ΕΓΓΡΑΦΟΥ / ΣΧΕΔΙΟΥ

NOTES / ΣΗΜΕΙΩΣΕΙΣ

1. TRAIN 4 IS SPARE.
2. PROCESS EMERGENCY RELIEFS.
3. THE NECESSITY OF KNOCK-OUT DRUM IN CS3 WILL BE EVALUATED

REV. ANAG.	DATE ΗΜΕΡΟΜ.	DESCRIPTION ΠΕΡΙΓΡΑΦΗ	DRAWN ΣΧΕΔΙΑΣΤΗΣ	CHECKED ΕΛΕΓΧΘΗΚΕ	APPROVED ΕΓΚΡΙΘΗΚΕ
3	2022.03.02	ISSUED FOR CPY's APPROVAL	AF	MD	EK
2	2022.01.26	ISSUED FOR CPY's APPROVAL	AF	MD	EK
1	2021.04.28	ISSUED FOR CPY's REVIEW	AF	MD	EK
A	2021.02.11	ISSUED FOR INTERNAL REVIEW	AF	MD	EK

COMPANY - ΕΤΑΙΡΕΙΑ: IGI Poseidon

CONTRACT No.: AP.ΣΥΜΒΟΛΑΙΟΥ: C109 - 2020

SUPERSEDED BY: ANTIKATAΣΤΑΘΗΚΕ ΑΠΟ:

SUPERSEDES THE: ANTIKAGIZOTA TO:

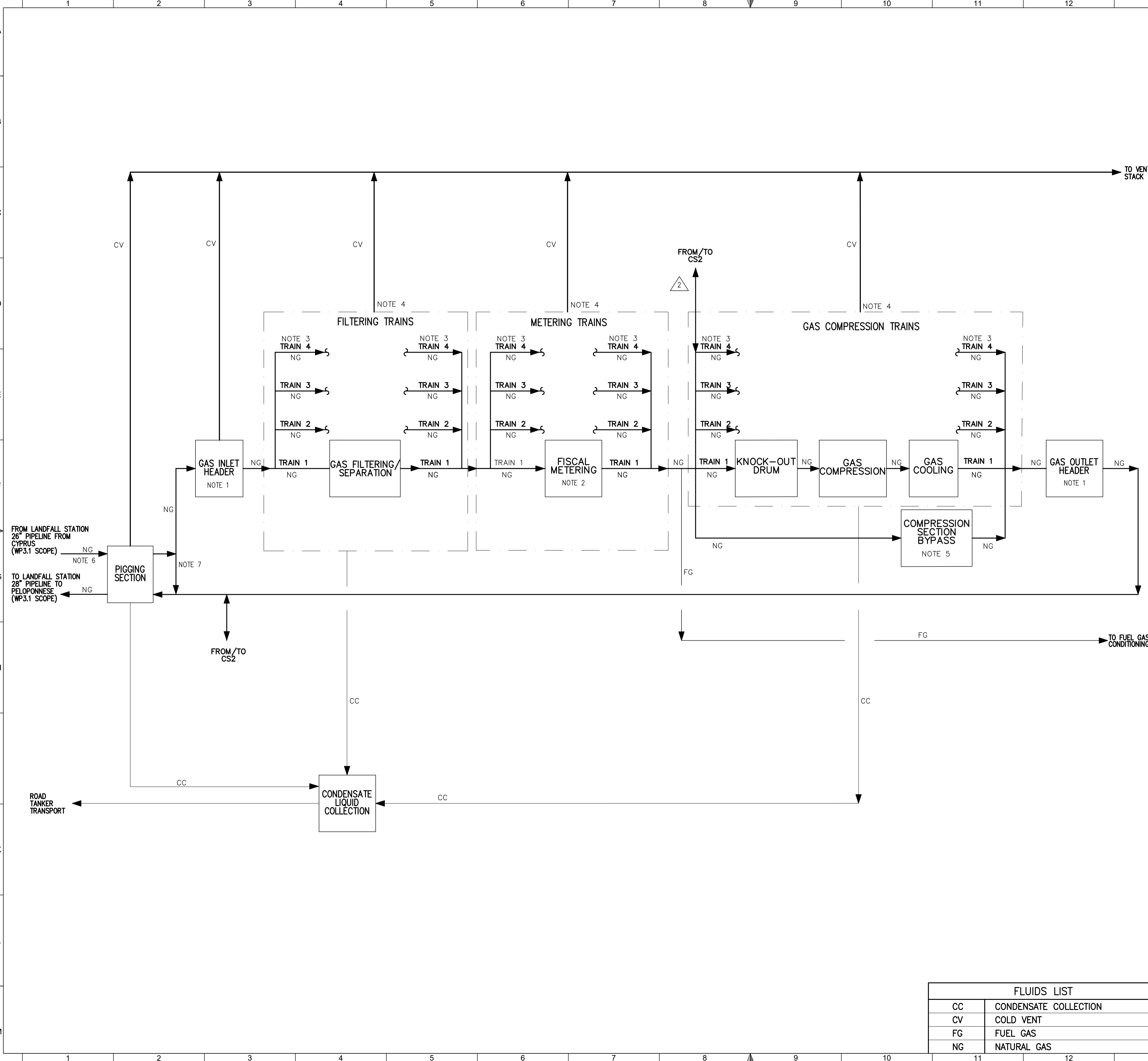


PROJECT - ΕΡΓΟ: EASTMED PIPELINE PROJECT FRONT END ENGINEERING & DESIGN (FEED) - FACILITIES ΕΡΓΟ ΑΓΩΓΟΥ EASTMED ΟΡΙΣΤΙΚΗ ΜΕΛΕΤΗ - ΣΤΑΘΜΟΙ

TITLE - ΤΙΤΛΟΣ: BLOCK FLOW DIAGRAM COMPRESSOR STATION CS3 MAIN PROCESS SYSTEMS

FLUIDS LIST	
CC	CONDENSATE COLLECTION
CV	COLD VENT
FG	FUEL GAS
NG	NATURAL GAS

SCALE - ΚΛΙΜΑΚΑ: NTS	PROJECT DWG No: AP. ΣΧ. ΕΡΓΟΥ:	REVISION / ANAG: 3
SIZE - ΜΕΓΕΘΟΣ: A1	COMPANY'S DWG No: AP. ΣΧ. ΕΤΑΙΡΕΙΑΣ:	SHEET / ΦΥΛΛΟ: 1. OF / ΑΡΤΟ. 1.
ENGINEER'S DWG No: AP. ΣΧ. ΜΕΛΕΤΗΣ: 617-360-07-001		FILENAME:



REFERENCE DOCUMENTS / DRAWINGS ΣΧΕΤΙΚΑ ΕΓΓΡΑΦΑ / ΣΧΕΔΙΑ	
DOCUMENT / DRAWING No ΑΡ. ΕΓΓΡΑΦΟΥ / ΣΧΕΔΙΟΥ	DOCUMENT / DRAWING TITLE ΑΡ. ΕΓΓΡΑΦΟΥ / ΣΧΕΔΙΟΥ

- NOTES / ΣΗΜΕΙΩΣΕΙΣ**
1. CONTAINS EMERGENCY SHUTDOWN VALVE, HIGH INTEGRITY PRESSURE PROTECTION SYSTEM (HIPPS).
 2. MEASURES QUANTITY OF NATURAL GAS ENTERING THE COMPRESSOR STATION.
 3. TRAIN 4 IS THE COMMON SPARE TRAIN WITH CS2/MS2..
 4. PROCESS EMERGENCY RELIEFS.
 5. INCLUDING GAS HEATERS AND PRESSURE REGULATION VALVES.
 6. ELECTRICAL HEATER WILL BE INSTALLED IN PARALLEL TO THE LANDFALL VALVE (WP 3.1 SCOPE) TO FACILITATE STATION START-UP PROCEDURE.
 7. STATION BY-PASS.

REV. ANAG.	DATE ΗΜΕΡΟΜ.	DESCRIPTION ΠΕΡΙΓΡΑΦΗ	DRAWN ΣΧΕΔΙΑΣΤΗΚΕ	CHECKED ΕΛΕΓΧΘΗΚΕ	APPROVED ΕΓΚΡΙΘΗΚΕ
3	2022.02.25	ISSUED FOR USE	AF	MD	EK
2	2022.01.26	ISSUED FOR APPROVAL	AF	MD	EK
1	2021.04.28	ISSUED FOR CPY's REVIEW	AF	MD	EK
A	2021.02.11	ISSUED FOR INTERNAL REVIEW	AF	MD	EK

COMPANY - ΕΤΑΙΡΕΙΑ: IGI Poseidon

CONTRACT No.: AP.ΣΥΜΒΟΛΑΙΟΥ: C109 - 2020

SUPERSEDED BY: ANTIKATAΣΤΑΘΗΚΕ ΑΠΟ:

SUPERSEDES THE: ANTIKAGIZTA TO:

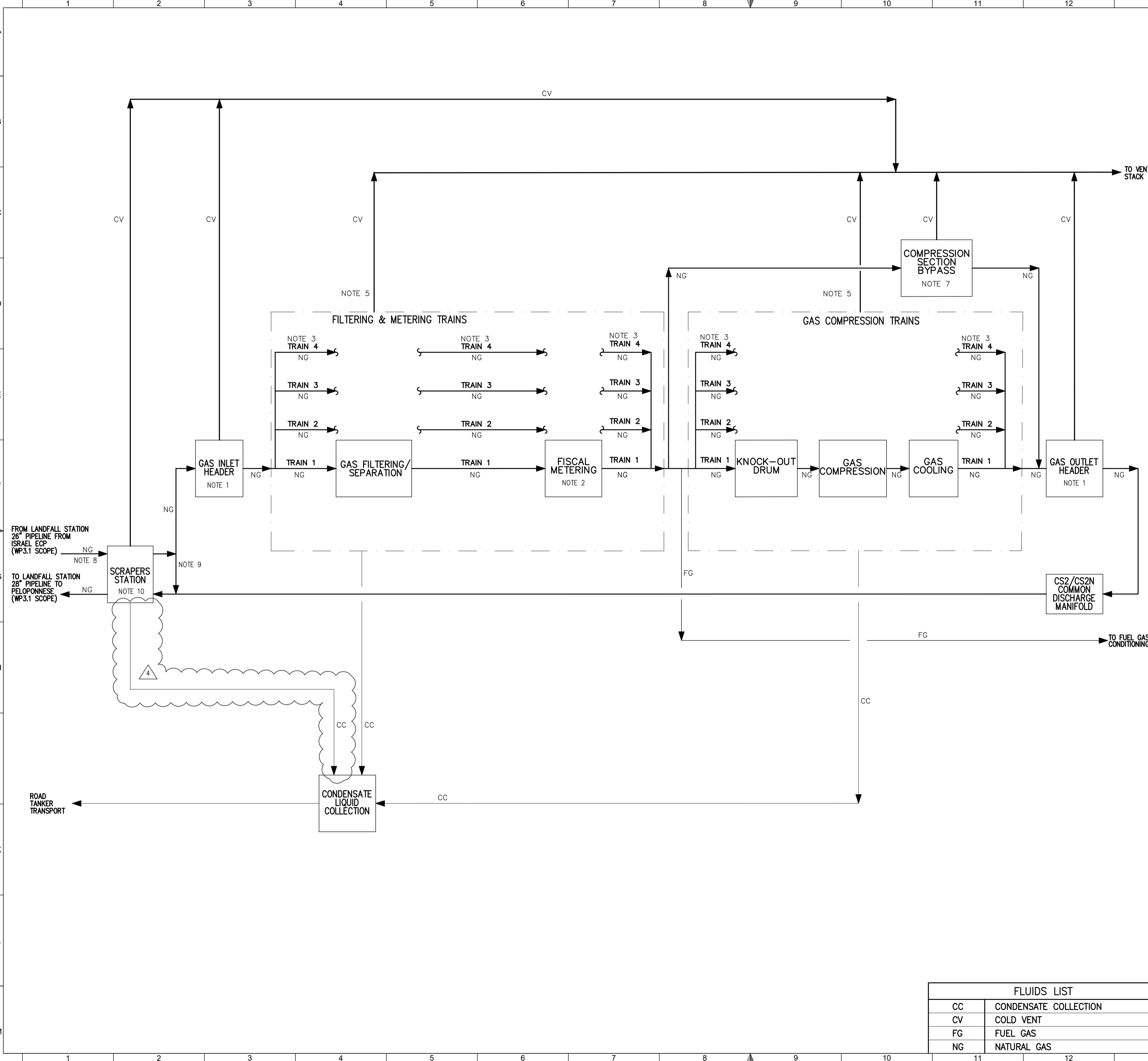
ENGINEER - ΜΕΛΕΤΗΤΗΣ / CONSORTIUM - ΣΥΜΠΡΑΞΗ: SAIPEM & CM ENGINEERING S.A.

PROJECT - ΕΡΓΟ: EASTMED PIPELINE PROJECT FRONT END ENGINEERING & DESIGN (FEED) - FACILITIES ΕΡΓΟ ΑΓΩΓΟΥ EASTMED ΟΡΙΣΤΙΚΗ ΜΕΛΕΤΗ - ΣΤΑΘΜΟΙ

TITLE - ΤΙΤΛΟΣ: BLOCK FLOW DIAGRAM COMPRESSOR / METERING STATION CS2 / MS2 N MAIN PROCESS SYSTEMS

FLUIDS LIST	
CC	CONDENSATE COLLECTION
CV	COLD VENT
FG	FUEL GAS
NG	NATURAL GAS

SCALE - ΚΛΙΜΑΚΑ	PROJECT DWG No: AP. ΣΧ. ΕΡΓΟΥ:	REVISION / ANAG.
NTS		3
SIZE - ΜΕΓΕΘΟΣ	COMPANY'S DWG No: AP. ΣΧ. ΕΤΑΙΡΕΙΑΣ:	ENGINEERS DWG No: AP. ΣΧ. ΜΕΛΕΤΗΤΗ:
A1		617-350-07-001
		SHEET / ΦΥΛΛΟ: 1 OF / ΑΡΤΟ. 1



REFERENCE DOCUMENTS / DRAWINGS ΣΧΕΤΙΚΑ ΕΓΓΡΑΦΑ / ΣΧΕΔΙΑ	
DOCUMENT / DRAWING No ΑΡ. ΕΓΓΡΑΦΟΥ / ΣΧΕΔΙΟΥ	DOCUMENT / DRAWING TITLE ΑΡ. ΕΓΓΡΑΦΟΥ / ΣΧΕΔΙΟΥ

NOTES / ΣΗΜΕΙΩΣΕΙΣ

1. CONTAINS EMERGENCY SHUTDOWN VALVE, HIGH INTEGRITY PRESSURE PROTECTION SYSTEM (HIPPS).
2. MEASURES QUANTITY OF NATURAL GAS ENTERING THE COMPRESSOR STATION.
3. TRAIN 4 IS SPARE.
4. DELETED
5. PROCESS EMERGENCY RELIEFS.
6. DELETED
7. INCLUDING GAS HEATERS AND PRESSURE REGULATION VALVES.
8. ELECTRICAL HEATER WILL BE INSTALLED IN PARALLEL TO THE LANDFALL VALVE (WP 3.1 SCOPE) TO FACILITATE STATION START-UP PROCEDURE.
9. STATION BY-PASS.
10. CONDENSATE COLLECTION IS PERFORMED LOCALLY.

FLUIDS LIST	
CC	CONDENSATE COLLECTION
CV	COLD VENT
FG	FUEL GAS
NG	NATURAL GAS

REV. ANAG.	DATE ΗΜΕΡΟΜ.	DESCRIPTION ΠΕΡΙΓΡΑΦΗ	DRAWN ΣΧΕΔΙΑΣΤΗΚΕ	CHECKED ΕΛΕΓΧΘΗΚΕ	APPROVED ΕΓΚΡΙΘΗΚΕ
4	2022.01.26	ISSUED FOR USE	AF	MD	EK
3	2021.09.29	ISSUED FOR USE	AF	MD	EK
2	2021.04.27	ISSUED FOR APPROVAL	AF	MD	EK
1	2021.03.05	ISSUED FOR CLIENT'S REVIEW	AF	MD	EK
A	2021.02.11	ISSUED FOR INTERNAL REVIEW	AF	MD	EK

COMPANY - ΕΤΑΙΡΕΙΑ: IGI Poseidon

CONTRACT No.: AP.ΣΥΜΒΟΛΑΙΟΥ: C109 - 2020

SUPERSEDED BY: ANTIKATAΣΤΑΘΗΚΕ ΑΠΟ:

SUPERSEDES THE: ANTIKAGIZTA TO:



PROJECT - ΕΡΓΟ: EASTMED PIPELINE PROJECT FRONT END ENGINEERING & DESIGN (FEED) - FACILITIES ΕΡΓΟ ΑΓΩΓΟΥ EASTMED ΟΡΙΣΤΙΚΗ ΜΕΛΕΤΗ - ΣΤΑΘΜΟΙ

TITLE - ΤΙΤΛΟΣ: BLOCK FLOW DIAGRAM COMPRESSOR / METERING STATION CS2/MS2 MAIN PROCESS SYSTEMS

SCALE - ΚΛΙΜΑΚΑ: NTS	PROJECT DWG No: AP.ΣΧ.ΕΡΓΟΥ:	REVISION / ANAG: 4
SIZE - ΜΕΓΕΘΟΣ: A1	COMPANY'S DWG No: AP.ΣΧ.ΕΤΑΙΡΕΙΑΣ:	ENGINEERS DWG No: AP.ΣΧ.ΜΕΛΕΤΗΤΗ: 617-340-07-001
SHEET / ΦΥΛΛΟ: 1 OF / ΑΡΤΟ. 1		FILENAME: